

# PCE

Connection  
to the future

**Industrial plugs and sockets 16A-125A**

**Industrial plugs and sockets 16A - 125A**

**Plugs**

Page

**20**



**Angled plugs**

Page

**24**



**Wall mounted plugs**

Page

**26**



**Flanged plugs**

Page

**32**



**Phase inverters**

Page

**40**



**Accessories**

Page

**44**



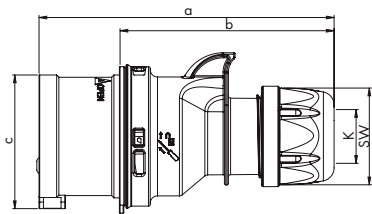
**Connectors**

Page

**46**



# Plugs

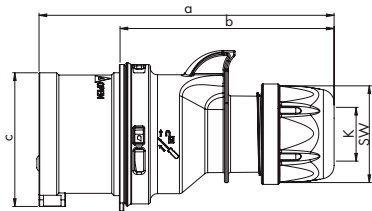


## „Shark“ Plug

	16 Amp			32 Amp		
	3	4	5	3	4	5
a	122	128	134	150	150	155
b	86	92	98	104	104	109
c	47	53	61	63	63	70
K_cable Ø [mm]	6-15	6-15	8-16	11,5-20	11,5-20	11,5-22
Kind of connection:	Screw terminal					
Wire flexible [mm <sup>2</sup> ]	1-2,5			2,5-6		
Contact screws [Ncm]	100 Ncm			110 Ncm		
SW	42	42	42	50	50	50
Weight [g]	112	131	154	184	204	236

- with screw terminals
- housing material: PA6
- contacts: brass
  - to order nickel-plated contacts please add a "v" e.g. 015-6v

**IP44** splashproof

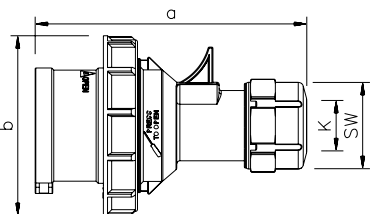


## „Turbo Shark“ Plug

	16 Amp			32 Amp		
	3	4	5	3	4	5
a	122	128	134	150	150	155
b	86	92	98	104	104	109
c	47	53	61	63	63	70
K_cable Ø [mm]	6-15	6-15	8-16	11,5-20	11,5-20	11,5-22
Kind of connection:	Screwless terminal					
Wire flexible [mm <sup>2</sup> ]	1-2,5			2,5-6		
SW	42	42	42	50	50	50
Weight [g]	114	135	159	189	209	244

- screwless connection technology
- housing material: PA6
- contacts: brass
  - to order nickel-plated contacts please add a "v" e.g. 015-6TTv

**IP44** splashproof

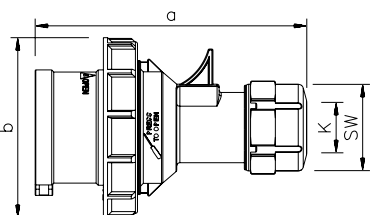


## „Twist“ Plug

	16 Amp			32 Amp		
	3	4	5	3	4	5
a	118	124	131	146	146	152
b	71	79	87	93	93	100
K_cable Ø [mm]	6-15	6-15	8-16	11,5-20	11,5-20	11,5-22
Kind of connection:	Screw terminal					
Wire flexible [mm <sup>2</sup> ]	1-2,5			2,5-6		
Contact screws [Ncm]	100 Ncm			110 Ncm		
SW	38	38	42	50	50	50
Weight [g]	133	153	180	218	237	273

- with screw terminals
- housing material: PA6
- contacts: brass
  - to order nickel-plated contacts please add a "v" e.g. 0152-6v

**IP67** watertight



## „Turbo Twist“ Plug

	16 Amp			32 Amp		
	3	4	5	3	4	5
a	118	124	131	146	146	152
b	71	79	87	93	93	100
K_cable Ø [mm]	6-15	6-15	8-16	11,5-20	11,5-20	11,5-22
Kind of connection:	Screwless terminal					
Wire flexible [mm <sup>2</sup> ]	1-2,5			2,5-6		
SW	38	38	42	50	50	50
Weight [g]	135	156	185	222	241	282

- screwless connection technology
- contacts: brass
  - to order nickel-plated contacts please add a "v" e.g. 0152-6TTv

**IP67** watertight



Amp.	Poles	pack. unit	110V~	230V~	400V~	500V~	>50-500V~	>50-500V~
			50/60Hz 4h	50/60Hz 3p=6h 4p+5p=9h	50/60Hz 3p=9h 4p+5p=6h	50/60Hz 7h	100-300Hz 10h	301-500Hz 2h
			Cat.No.	Cat.No.	Cat.No.	Cat.No.	Cat.No.	Cat.No.
16	3	10	013-4	<b>013-6</b>	013-9	013-7	013-10	013-2
16	4	10	014-4	014-9	<b>014-6</b>	014-7	014-10	014-2
16	5	10	015-4	015-9	<b>015-6</b>	015-7	015-10	015-2
32	3	10	023-4	<b>023-6</b>	023-9	023-7	023-10	023-2
32	4	10	024-4	024-9	<b>024-6</b>	024-7	024-10	024-2
32	5	10	025-4	025-9	<b>025-6</b>	025-7	025-10	025-2



015-6

16	3	10	013-4TT	<b>013-6TT</b>	013-9TT			
16	4	10	014-4TT	014-9TT	<b>014-6TT</b>			
16	5	10	015-4TT	015-9TT	<b>015-6TT</b>			
32	3	10	023-4TT	<b>023-6TT</b>	023-9TT			
32	4	10	024-4TT	024-9TT	<b>024-6TT</b>			
32	5	10	025-4TT	025-9TT	<b>025-6TT</b>			

**TURBO**  
TWIST  
click



015-6TT

16	3	10	0132-4	<b>0132-6</b>	0132-9	0132-7	0132-10	0132-2
16	4	10	0142-4	0142-9	<b>0142-6</b>	0142-7	0142-10	0142-2
16	5	10	0152-4	0152-9	<b>0152-6</b>	0152-7	0152-10	0152-2
32	3	10	0232-4	<b>0232-6</b>	0232-9	0232-7	0232-10	0232-2
32	4	10	0242-4	0242-9	<b>0242-6</b>	0242-7	0242-10	0242-2
32	5	10	0252-4	0252-9	<b>0252-6</b>	0252-7	0252-10	0252-2



0152-6

16	3	10	0132-4TT	<b>0132-6TT</b>	0132-9TT			
16	4	10	0142-4TT	0142-9TT	<b>0142-6TT</b>			
16	5	10	0152-4TT	0152-9TT	<b>0152-6TT</b>			
32	3	10	0232-4TT	<b>0232-6TT</b>	0232-9TT			
32	4	10	0242-4TT	0242-9TT	<b>0242-6TT</b>			
32	5	10	0252-4TT	0252-9TT	<b>0252-6TT</b>			

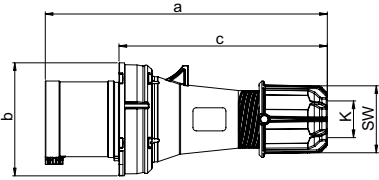
**TURBO**  
TWIST  
click



0132-6TT



# Plugs

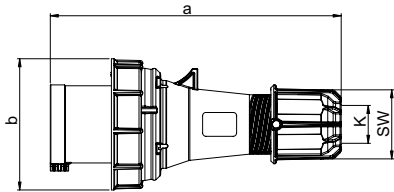


## „Power Twist“ Plug

	63 Amp		
Poles	3	4	5
a	257	257	257
b	102	102	102
c	190	190	190
K_cable Ø [mm]	14,5-36	14,5-36	14,5-36
Kind of connection:	Contact frame with screws		
Wire flexible [mm <sup>2</sup> ]	6-16		
Contact screws [Ncm]	200 Ncm		
SW	61	61	61
Weight [g]	530	572	621

- contact frame with screws
- housing material: PA6
- contacts: nickel-plated contacts with pilot contact (see page 9)

**IP44** splashproof

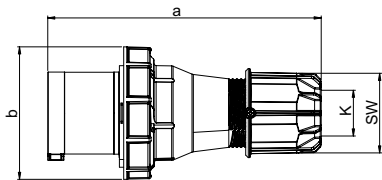


## „Power Twist“ Plug

	63 Amp		
Poles	3	4	5
a	257	257	257
b	114	114	114
K_cable Ø [mm]	14,5-36	14,5-36	14,5-36
Kind of connection:	Contact frame with screws		
Wire flexible [mm <sup>2</sup> ]	6-16		
Contact screws [Ncm]	200 Ncm		
SW	61	61	61
Weight [g]	570	617	666

- contact frame with screws
- housing material: PA6
- contacts: nickel-plated contacts with pilot contact (see page 9)

**IP66/67** watertight



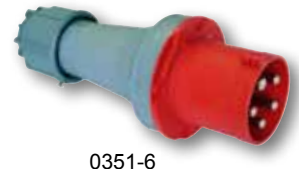
## „Power Twist“ Plug

	125 Amp		
Poles	3	4	5
a	270	270	270
b	131	131	131
K_cable Ø [mm]	22,5-50	22,5-50	22,5-50
Kind of connection:	Contact frame with screws		
Wire flexible [mm <sup>2</sup> ]	16-50		
Contact screws [Ncm]	450 Ncm		
SW	81	81	81
Weight [g]	956	1064	1169

- contact frame with screws
- housing material: PA6
- contacts: nickel-plated contacts with pilot contact (see page 9)

**IP66/67** watertight

Amp.	Poles	pack. unit	110V~	230V~	400V~	500V~	>50-500V~	>50-500V~
			50/60Hz 4h	50/60Hz 3p=6h 4p+5p=9h	50/60Hz 3p=9h 4p+5p=6h	50/60Hz 7h	100-300Hz 10h	301-500Hz 2h
			Cat.No.	Cat.No.	Cat.No.	Cat.No.	Cat.No.	Cat.No.
63	3	2	0331-4	<b>0331-6</b>	0331-9	0331-7	0331-10	0331-2
63	4	2	0341-4	0341-9	<b>0341-6</b>	0341-7	0341-10	0341-2
63	5	2	0351-4	0351-9	<b>0351-6</b>	0351-7	0351-10	0351-2



0351-6

63	3	2	033-4	<b>033-6</b>	033-9	033-7	033-10	033-2
63	4	2	034-4	034-9	<b>034-6</b>	034-7	034-10	034-2
63	5	2	035-4	035-9	<b>035-6</b>	035-7	035-10	035-2



035-6

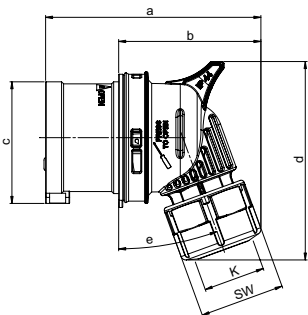
125	3	2	043-4	<b>043-6</b>	043-9	043-7	043-10	043-2
125	4	2	044-4	044-9	<b>044-6</b>	044-7	044-10	044-2
125	5	2	045-4	045-9	<b>045-6</b>	045-7	045-10	045-2



045-6



# Angled plugs

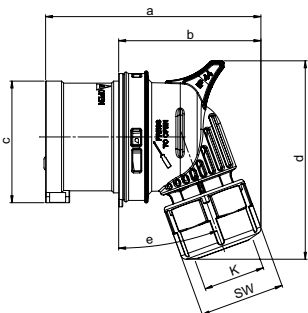


## „Twist“ Angled plug

	16 Amp		32 Amp	
Poles	3	4	5	5
a	96	98	108	135
b	59	62	71	90
c	47	53	61	70
d	82	87	99	114
e [°]	15	15	20	25
K_cable Ø [mm]	6-15	6-15	8-16	11,5-22
Kind of connection:	Screw terminal			
Wire flexible [mm <sup>2</sup> ]	1-2,5		2,5-6	
Contact screws [Ncm]	100 Ncm		110Ncm	
SW	38	38	42	50
Weight [g]	110	133	158	238

- with screw terminals
- housing material  
16/3 16/4: PA6  
16/5 32/5: PC/ABS
- contacts: brass
  - to order nickel-plated contacts please add a "v" e.g. 8015-6v

**IP44** splashproof

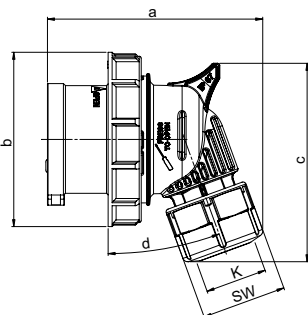


## „Turbo Twist“ Angled plug

	16 Amp		32 Amp	
Poles	3	4	5	5
a	96	98	108	135
b	59	62	71	90
c	47	53	61	70
d	82	87	99	114
e [°]	15	15	20	25
K_cable Ø [mm]	6-15	6-15	8-16	11,5-22
Kind of connection:	Screwless terminal			
Wire flexible [mm <sup>2</sup> ]	1-2,5		2,5-6	
SW	38	38	42	50
Weight [g]	113	137	163	247

- screwless connection technology
- housing material  
16/3 16/4: PA6  
16/5 32/5: PC/ABS
- contacts: brass
  - to order nickel-plated contacts please add a "v" e.g. 8015-6TTv

**IP44** splashproof

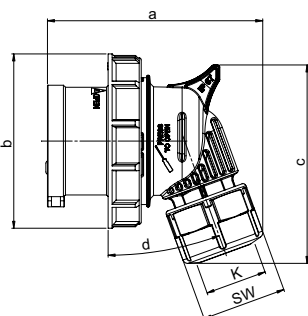


## „Twist“ Angled plug

	16 Amp		32 Amp	
Poles	3	4	5	5
a	96	98	108	135
b	71	79	87	100
c	82	87	99	114
d [°]	15	15	20	25
K_cable Ø [mm]	6-15	6-15	8-16	11,5-22
Kind of connection:	Screw terminal			
Wire flexible [mm <sup>2</sup> ]	1-2,5		2,5-6	
Contact screws [Ncm]	100 Ncm		110Ncm	
SW	38	38	42	50
Weight [g]	133	154	184	275

- with screw terminals
- housing material  
16/3 16/4: PA6  
16/5 32/5: PC/ABS
- contacts: brass
  - to order nickel-plated contacts please add a "v" e.g. 80152-6v

**IP67** watertight



## „Turbo Twist“ Angled plug

	16 Amp		32 Amp	
Poles	3	4	5	5
a	96	98	108	135
b	71	79	87	100
c	82	87	99	114
d [°]	15	15	20	25
K_cable Ø [mm]	6-15	6-15	8-16	11,5-22
Kind of connection:	Screwless terminal			
Wire flexible [mm <sup>2</sup> ]	1-2,5		2,5-6	
SW	38	38	42	50
Weight [g]	135	157	189	284

- screwless connection technology
- housing material  
16/3 16/4: PA6  
16/5 32/5: PC/ABS
- contacts: brass
  - to order nickel-plated contacts please add a "v" e.g. 80152-6TTv

**IP67** watertight

Amp.	Poles	pack. unit	110V~	230V~	400V~	500V~	>50-500V~	>50-500V~
			50/60Hz 4h	50/60Hz 3p=6h 4p+5p=9h	50/60Hz 3p=9h 4p+5p=6h	50/60Hz 7h	100-300Hz 10h	301-500Hz 2h
			Cat.No.	Cat.No.	Cat.No.	Cat.No.	Cat.No.	Cat.No.
16	3	10	8013-4	<b>8013-6</b>	8013-9	8013-7	8013-10	8013-2
16	4	10	8014-4	8014-9	<b>8014-6</b>	8014-7	8014-10	8014-2
16	5	10	8015-4	8015-9	<b>8015-6</b>	8015-7	8015-10	8015-2
32	5	10	8025-4	8025-9	<b>8025-6</b>	8025-7	8025-10	8025-2



8013-6

16	3	10	8013-4TT	<b>8013-6TT</b>	8013-9TT			
16	4	10	8014-4TT	8014-9TT	<b>8014-6TT</b>			
16	5	10	8015-4TT	8015-9TT	<b>8015-6TT</b>			
32	5	10	8025-4TT	8025-9TT	<b>8025-6TT</b>			

**TURBO**  
TWIST  
click



8013-6TT

16	3	10	80132-4	<b>80132-6</b>	80132-9	80132-7	80132-10	80132-2
16	4	10	80142-4	80142-9	<b>80142-6</b>	80142-7	80142-10	80142-2
16	5	10	80152-4	80152-9	<b>80152-6</b>	80152-7	80152-10	80152-2
32	5	10	80252-4	80252-9	<b>80252-6</b>	80252-7	80252-10	80252-2



80142-6

16	3	10	80132-4TT	<b>80132-6TT</b>	80132-9TT			
16	4	10	80142-4TT	80142-9TT	<b>80142-6TT</b>			
16	5	10	80152-4TT	80152-9TT	<b>80152-6TT</b>			
32	5	10	80252-4TT	80252-9TT	<b>80252-6TT</b>			



example for connection

**TURBO**  
TWIST  
click

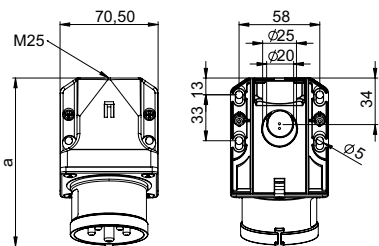


80142-6TT





# Wall mounted plugs



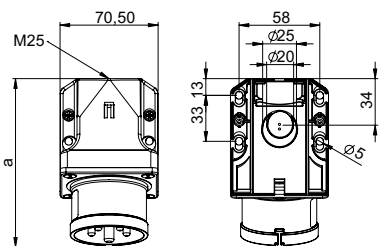
b=height  
angle=15°

## Wall mounted plug

	16 Amp			32 Amp		
	3	4	5	3	4	5
a	120	121	122	131	131	132
b	76	76	79	82	82	85
M	25	25	25	25	25	25
Kind of connection: Screw terminal						
Wire flexible [mm <sup>2</sup> ]	1-2,5			2,5-6		
solid [mm <sup>2</sup> ]	1-4			2,5-10		
Contact screws [Ncm]	100 Ncm			110 Ncm		
Weight [g]	173	188	205	212	232	253

- with screw terminals
- housing material: PA6
- contacts: brass
  - to order nickel-plated contacts please add a "v" e.g. 515-6v
- top and rear entry
- incl. cable gland

**IP44** splashproof



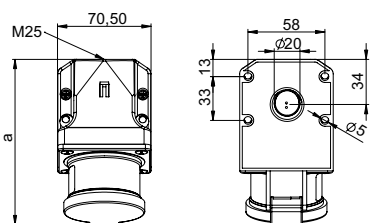
b=height  
angle=15°

## „Turbo Twist“ Wall mounted plug

	16 Amp		32 Amp	
	3	5	4	5
a	120	122	131	132
b	76	79	82	85
M	25	25	25	25
Kind of connection: Screwless terminal				
Wire flexible [mm <sup>2</sup> ]	1-2,5		2,5-6	
solid [mm <sup>2</sup> ]	1-4		2,5-10	
Weight [g]	176	209	238	261

- screwless connection technology
- housing material: PA6
- contacts: brass
  - to order nickel-plated contacts please add a "v" e.g. 515-6TTv
- top and rear entry
- incl. cable gland

**IP44** splashproof



b=height  
angle=15°

## Wall mounted plug

	16 Amp			32 Amp		
	3	4	5	3	4	5
a	127	128	128	137	137	140
b	92	94	97	99	99	104
M	25	25	25	25	25	25
Kind of connection: Screw terminal						
Wire flexible [mm <sup>2</sup> ]	1-2,5			2,5-6		
solid [mm <sup>2</sup> ]	1-4			2,5-10		
Contact screws [Ncm]	100 Ncm			110 Ncm		
Weight [g]	230	245	263	272	292	315

- with screw terminals
- with hinged lid and gasket, for increased ingress protection
- housing material: PA6
- contacts: brass
  - to order nickel-plated contacts please add a "v" e.g. 515-6dv
- top and rear entry
- incl. cable gland

**IP44** splashproof

Amp.	Poles	pack. unit	110V~	230V~	400V~	500V~	>50- 500V~	>50- 500V~
			50/60Hz 4h	50/60Hz 3p=6h 4p+5p=9h	50/60Hz 3p=9h 4p+5p=6h	50/60Hz 7h	100-300Hz 10h	301-500Hz 2h
			Cat.No.	Cat.No.	Cat.No.	Cat.No.	Cat.No.	Cat.No.
16	3	10	513-4	<b>513-6</b>	513-9	513-7	513-10	513-2
16	4	10	514-4	514-9	<b>514-6</b>	514-7	514-10	514-2
16	5	10	515-4	515-9	<b>515-6</b>	515-7	515-10	515-2
32	3	10	523-4	<b>523-6</b>	523-9	523-7	523-10	523-2
32	4	10	524-4	524-9	<b>524-6</b>	524-7	524-10	524-2
32	5	10	525-4	525-9	<b>525-6</b>	525-7	525-10	525-2



515-6

16	3	10	513-4TT	<b>513-6TT</b>	513-9TT			
16	5	10	515-4TT	515-9TT	<b>515-6TT</b>			
32	4	10	524-4TT	524-9TT	<b>524-6TT</b>			
32	5	10	525-4TT	525-9TT	<b>525-6TT</b>			

**TURBO**  
TWIST  
click



515-6TT

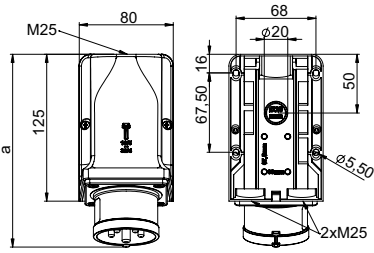
16	3	10	513-4d	<b>513-6d</b>	513-9d	513-7d	513-10d	513-2d
16	4	10	514-4d	514-9d	<b>514-6d</b>	514-7d	514-10d	514-2d
16	5	10	515-4d	515-9d	<b>515-6d</b>	515-7d	515-10d	515-2d
32	3	10	523-4d	<b>523-6d</b>	523-9d	523-7d	523-10d	523-2d
32	4	10	524-4d	524-9d	<b>524-6d</b>	524-7d	524-10d	524-2d
32	5	10	525-4d	525-9d	<b>525-6d</b>	525-7d	525-10d	525-2d



515-6d



# Wall mounted plugs



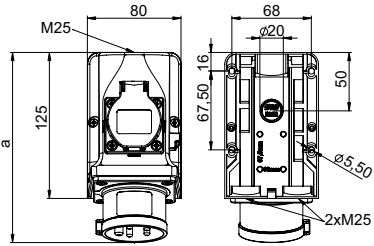
b=height  
angle=15°

## Wall mounted plug

Poles	16 Amp			32 Amp		
	3	4	5	3	4	5
a	163	163	164	173	173	174
b	109	109	112	115	115	118
M	3x25	3x25	3x25	3x25	3x25	3x25
Kind of connection:				Screw terminal		
Wire flexible [mm <sup>2</sup> ]	1-2,5			2,5-6		
solid [mm <sup>2</sup> ]	1-4			2,5-10		
Contact screws [Ncm]	100 Ncm			110 Ncm		
Weight [g]	263	278	295	302	322	341

- with screw terminals
- for wiring through
- housing material: PA6
- contacts: brass
  - to order nickel-plated contacts please add a "v" e.g. 9515-6v
- top, 2x bottom or rear entry
- incl. cable gland

**IP44** splashproof



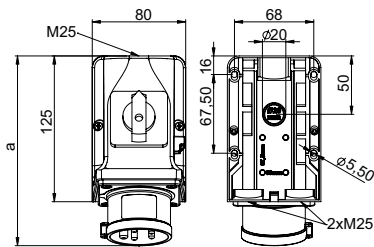
b=height  
angle=15°

## Wall mounted plug - COMBO

Poles	16 Amp			32 Amp		
	3	4	5	3	4	5
a	162	162	163	172	172	173
b	117	117	117	117	117	118
M	3x25	3x25	3x25	3x25	3x25	3x25
Kind of connection:				Screw terminal		
Wire flexible [mm <sup>2</sup> ]	1-2,5			2,5-6		
solid [mm <sup>2</sup> ]	1-4			2,5-10		
Contact screws CEE [Ncm]	100 Ncm			110 Ncm		
Screw terminals [Ncm]	120 Ncm					
Weight [g]	367	382	399	422	442	463

- with screw terminals
- wall mounted plug with integrated socket (DIN 49440)
- connecting terminals up to 10mm<sup>2</sup>
- **ready wired**
- for plug 32A the socket 16A (DIN 49440) is protected by fuse (10A slow)
- housing material: PA6
- contacts: brass
  - to order nickel-plated contacts please add a "v" e.g. 95215-6v
- top, 2x bottom or rear entry
- incl. cable gland
- special design with Belg./French socket outlet or non wired version are available on request

**IP44** splashproof



b=height  
angle=15°

## Wall mounted plug with switch

Poles	16 Amp	32 Amp
	5	5
a	163	173
b	128	128
M	3x25	3x25
Kind of connection: Screw terminal		
Wire flexible [mm <sup>2</sup> ]	1-2,5	2,5-6
solid [mm <sup>2</sup> ]	1-4	2,5-10
Weight [g]	474	522

- with screw terminals
- wall mounting plug with integrated ON/OFF switch AC22A
- **prewired**
- housing material: PA6
- contacts: brass
  - to order nickel-plated contacts please add a "v" e.g. 75615-6v
- top, 2x bottom or rear entry
- incl. cable gland

**IP44** splashproof

Amp.	Poles	pack. unit	110V~	230V~	400V~	500V~	>50-500V~	>50-500V~
			50/60Hz 4h	50/60Hz 3p=6h 4p+5p=9h	50/60Hz 3p=9h 4p+5p=6h	50/60Hz 7h	100-300Hz 10h	301-500Hz 2h
			Cat.No.	Cat.No.	Cat.No.	Cat.No.	Cat.No.	Cat.No.
16	3	5	9513-4	<b>9513-6</b>	9513-9	9513-7	9513-10	9513-2
16	4	5	9514-4	9514-9	<b>9514-6</b>	9514-7	9514-10	9514-2
16	5	5	9515-4	9515-9	<b>9515-6</b>	9515-7	9515-10	9515-2
32	3	5	9523-4	<b>9523-6</b>	9523-9	9523-7	9523-10	9523-2
32	4	5	9524-4	9524-9	<b>9524-6</b>	9524-7	9524-10	9524-2
32	5	5	9525-4	9525-9	<b>9525-6</b>	9525-7	9525-10	9525-2



9515-6



16	3	5		<b>95213-6</b>	
16	4	5		95214-9	<b>95214-6</b>
16	5	5			<b>95215-6</b>
32	3	5		<b>95223-6</b>	
32	4	5		95224-9	<b>95224-6</b>
32	5	5			<b>95225-6</b>



95215-6



95225-6

16	5	5			<b>75615-6</b>
32	5	5			<b>75625-6</b>

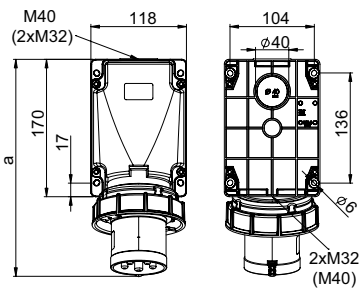


75615-6





# Wall mounted plugs



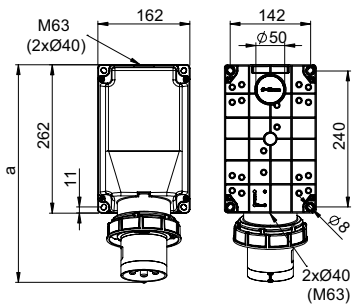
b=height  
angle=15°

## „Power Twist“ Wall mounted plug

	63 Amp		
Poles	3	4	5
a	271	271	271
b	175	175	175
Kind of connection:	Contact frame with screws		
Wire flexible [mm <sup>2</sup> ]	6-16		
solid [mm <sup>2</sup> ]	6-25		
Contact screws [Ncm]	200 Ncm		
Weight [g]	812	864	914

- contact frame with screws
- housing material: PC/ABS
- contacts: nickel-plated contacts, with pilot contact (see page 9)
- top, bottom or rear entry
- housing can be rotated by 180°
- incl. blank cable gland
- for waterproof cover and cable-glands see accessories page 44

IP66/67 watertight



b=height  
angle=15°

## „Power Twist“ Wall mounted plug

	125 Amp		
Poles	3	4	5
a	387	387	387
b	209	209	209
Kind of connection:	Contact frame with screws		
Wire flexible [mm <sup>2</sup> ]	16-50		
solid [mm <sup>2</sup> ]	16-70		
Contact screws [Ncm]	450 Ncm		
Weight [g]	1620	1725	1834

- contact frame with screws
- housing material: PC/ABS
- contacts: nickel-plated contacts, with pilot contact (see page 9)
- top, bottom or rear entry
- housing can be rotated by 180°
- incl. blank cable gland
- for waterproof cover and cable-glands see accessories page 44

IP66/67 watertight

Amp.	Poles	pack. unit	110V~	230V~	400V~	500V~	>50- 500V~	>50- 500V~
			50/60Hz 4h	50/60Hz 3p=6h 4p+5p=9h	50/60Hz 3p=9h 4p+5p=6h	50/60Hz 7h	100-300Hz 10h	301-500Hz 2h
			Cat.No.	Cat.No.	Cat.No.	Cat.No.	Cat.No.	Cat.No.
63	3	2	533-4	<b>533-6</b>	533-9	533-7	533-10	533-2
63	4	2	534-4	534-9	<b>534-6</b>	534-7	534-10	534-2
63	5	2	535-4	535-9	<b>535-6</b>	535-7	535-10	535-2



535-6

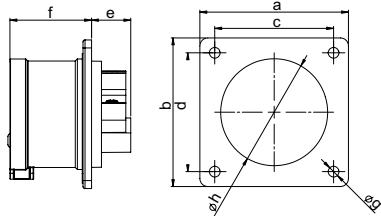
125	3	1	543-4	<b>543-6</b>	543-9	543-7	543-10	543-2
125	4	1	544-4	544-9	<b>544-6</b>	544-7	544-10	544-2
125	5	1	545-4	545-9	<b>545-6</b>	545-7	545-10	545-2



545-6



# Flanged plugs

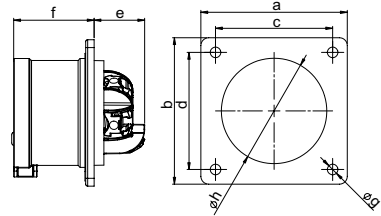


## Flanged plug straight

	16 Amp	32 Amp
Poles	5	5
Flange		
a x b	75	75
Fixing center		
c x d	60	60
e	20	21
f	42	51
g	5,5	5,5
h	55	55
Kind of connection:	Screw terminal	
Wire flexible [mm <sup>2</sup> ]	1-2,5	2,5-6
solid [mm <sup>2</sup> ]	1-4	2,5-10
Contact screws [Ncm]	100 Ncm	110 Ncm
Weight [g]	121	170

- with screw terminals
- housing material: PA6
- contacts: brass
  - to order nickel-plated contacts please add a "v" e.g. 615-6f7v
- According to EN 60309: For correct use a locking device has to be provided (see page 34)

**IP44** splashproof

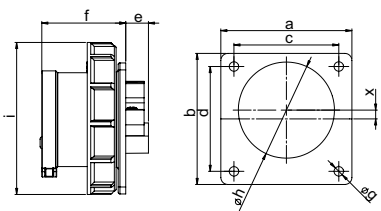


## „Turbo Twist“ Flanged plug straight

	16 Amp	32 Amp
Poles	5	5
Flange		
a x b	75	75
Fixing center		
c x d	60	60
e	26	29
f	42	51
g	5,5	5,5
h	55	55
Kind of connection:	Screwless terminal	
Wire flexible [mm <sup>2</sup> ]	1-2,5	2,5-6
solid [mm <sup>2</sup> ]	1-4	2,5-10
Weight [g]	126	178

- screwless connection technology
- housing material: PA6
- contacts: brass
  - to order nickel-plated contacts please add a "v" e.g. 615-6TTf7v
- According to EN 60309: For correct use a locking device has to be provided (see page 34)

**IP44** splashproof

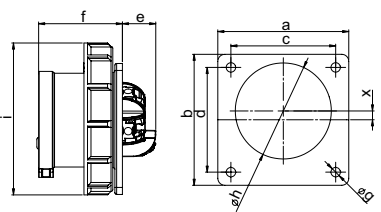


## Flanged plug straight

	16 Amp		32 Amp
Poles	3	5	5
Flange			
a x b	75	75	75
Fixing center			
c x d	60	60	60
e	15	13	14
f	48	48	58
g	5,5	5,5	5,5
h	43	55	55
i	71	87	100
x	11,3	5,05	0
Kind of connection:	Screw terminal		
Wire flexible [mm <sup>2</sup> ]	1-2,5		2,5-6
solid [mm <sup>2</sup> ]	1-4		2,5-10
Contact screws [Ncm]	100 Ncm		110 Ncm
Weight [g]	109	145	208

- with screw terminals
- housing material: PA6
- contacts: brass
  - to order nickel-plated contacts please add a "v" e.g. 6152-6v
- According to EN 60309: For correct use a locking device has to be provided (see page 34)
- for 16A 3p and 16A 5p the plug is placed off centered for keeping the standards

**IP67** watertight



## „Turbo Twist“ Flanged plug straight

	16 Amp		32 Amp
Poles	3	5	5
Flange			
a x b	75	75	75
Fixing center			
c x d	60	60	60
e	20	20	21
f	48	48	58
g	5,5	5,5	5,5
h	43	55	55
i	71	87	100
x	11,3	5,05	0
Kind of connection:	Screwless terminal		
Wire flexible [mm <sup>2</sup> ]	1-2,5		2,5-6
solid [mm <sup>2</sup> ]	1-4		2,5-10
Weight [g]	112	149	216

- screwless connection technology
- housing material: PA6
- contacts: brass
  - to order nickel-plated contacts please add a "v" e.g. 6152-6ttv
- According to EN 60309: For correct use a locking device has to be provided (see page 34)
- for 16A 3p and 16A 5p the plug is placed off centered for keeping the standards

**IP67** watertight

Amp.	Poles	pack. unit	110V~	230V~	400V~	500V~	>50-500V~	>50-500V~
			50/60Hz 4h	50/60Hz 3p=6h 4p+5p=9h	50/60Hz 3p=9h 4p+5p=6h	50/60Hz 7h	100-300Hz 10h	301-500Hz 2h
			Cat.No.	Cat.No.	Cat.No.	Cat.No.	Cat.No.	Cat.No.
<b>with flange 75 x 75</b>								
16	5	10	615-4f7	615-9f7	<b>615-6f7</b>	615-7f7	615-10f7	615-2f7
32	5	10	625-4f7	625-9f7	<b>625-6f7</b>	625-7f7	625-10f7	625-2f7



615-6f7

<b>with flange 75 x 75</b>								
16	5	10	615-4TTf7	615-9TTf7	<b>615-6TTf7</b>			
32	5	10	625-4TTf7	625-9TTf7	<b>625-6TTf7</b>			



615-6TTf7

<b>with flange 75 x 75</b>								
16	3	10	6132-4	<b>6132-6</b>	6132-9	6132-7	6132-10	6132-2
16	5	10	6152-4	6152-9	<b>6152-6</b>	6152-7	6152-10	6152-2
32	5	10	6252-4	6252-9	<b>6252-6</b>	6252-7	6252-10	6252-2

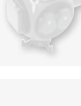


6152-6

<b>with flange 75 x 75</b>								
16	3	10	6132-4TT	<b>6132-6TT</b>	6132-9TT			
16	5	10	6152-4TT	6152-9TT	<b>6152-6TT</b>			
32	5	10	6252-4TT	6252-9TT	<b>6252-6TT</b>			

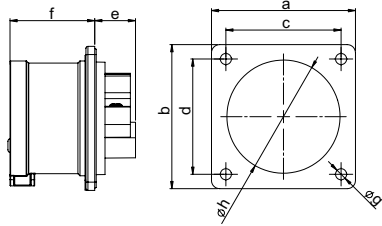


6152-6TT





# Flanged plugs

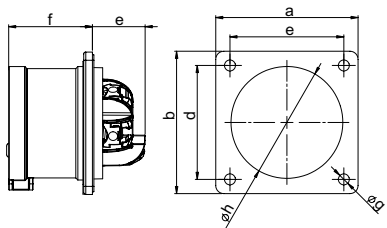


## Flanged plug straight

	16 Amp			32 Amp		
	3	4	5	3	4	5
Poles	3	4	5	3	4	5
Flange						
a x b	70	70	70	70	70	70
Fixing center						
c x d	56	56	56	56	56	56
e	21	21	20	21	21	21
f	42	42	42	51	51	51
g	5,5	5,5	5,5	5,5	5,5	5,5
h	43	43	55	55	55	55
Kind of connection:	Screw terminal					
Wire flexible [mm <sup>2</sup> ]	1-2,5			2,5-6		
solid [mm <sup>2</sup> ]	1-4			2,5-10		
Contact screws [Ncm]	100 Ncm			110 Ncm		
Weight [g]	86	101	118	125	145	165

- with screw terminals
- housing material: PA6
- contacts: brass
  - to order nickel-plated contacts please add a "v" e.g. 615-6v
- According to EN 60309: For correct use a locking device has to be provided (see below)

**IP44** splashproof

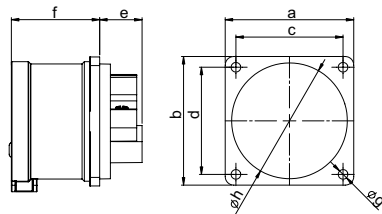


## „Turbo Twist“ Flanged plug straight

	16 Amp		32 Amp	
	3	5	4	5
Poles	3	5	4	5
Flange				
a x b	70	70	70	70
Fixing center				
c x d	56	56	56	56
e	26	26	29	29
f	42	42	51	51
g	5,5	5,5	5,5	5,5
h	43	55	55	55
Kind of connection:	Screwless terminal			
Wire flexible [mm <sup>2</sup> ]	1-2,5		2,5-6	
solid [mm <sup>2</sup> ]	1-4		2,5-10	
Weight [g]	899	122	151	172

- screwless connection technology
- housing material: PA6
- contacts: brass
  - to order nickel-plated contacts please add a "v" e.g. 615-6TTv
- According to EN 60309: For correct use a locking device has to be provided (see below)

**IP44** splashproof

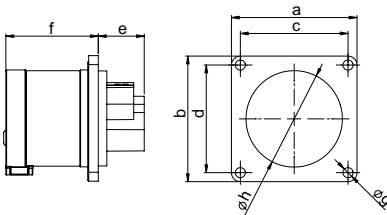


## Flanged plug straight

	16 Amp		
	3	4	5
Poles	3	4	5
Flange			
a x b	60	60	60
Fixing center			
c x d	50	50	50
e	21	21	20
f	42	42	42
g	4,5	4,5	4,5
h	43	43	55
Kind of connection:	Screw terminal		
Wire flexible [mm <sup>2</sup> ]	1-2,5		
solid [mm <sup>2</sup> ]	1-4		
Contact screws [Ncm]	100 Ncm		
Weight [g]	78	93	109

- with screw terminals
- housing material: PA6
- contacts: brass
  - to order nickel-plated contacts please add a "v" e.g. 615-6f6v
- According to EN 60309: For correct use a locking device has to be provided (see below)

**IP44** splashproof

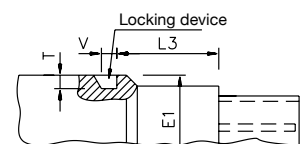
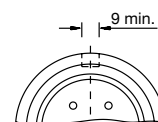
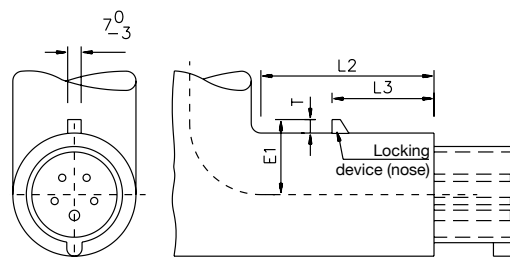
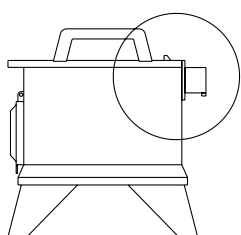


## Flanged plug straight

	16 Amp	
	3	4
Poles	3	4
Flange		
a x b	56	56
Fixing center		
c x d	48	48
e	21	21
f	42	42
g	4,5	4,5
h	43	43
Kind of connection:	Screw terminal	
Wire flexible [mm <sup>2</sup> ]	1-2,5	
solid [mm <sup>2</sup> ]	1-4	
Contact screws [Ncm]	100 Ncm	
Weight [g]	76	91

- with screw terminals
- housing material: PA6
- contacts: brass
  - to order nickel-plated contacts please add a "v" e.g. 615-6f3v
- According to EN 60309: For correct use a locking device has to be provided (see below)

**IP44** splashproof



Amp.	Poles	pack. unit	110V~	230V~	400V~	500V~	>50-500V~	>50-500V~
			50/60Hz 4h	50/60Hz 3p=6h 4p+5p=9h	50/60Hz 3p=9h 4p+5p=6h	50/60Hz 7h	100-300Hz 10h	301-500Hz 2h
			Cat.No.	Cat.No.	Cat.No.	Cat.No.	Cat.No.	Cat.No.
<b>with flange 70 x 70</b>								
16	3	10	613-4	<b>613-6</b>	613-9	613-7	613-10	613-2
16	4	10	614-4	614-9	<b>614-6</b>	614-7	614-10	614-2
16	5	10	615-4	615-9	<b>615-6</b>	615-7	615-10	615-2
32	3	10	623-4	<b>623-6</b>	623-9	623-7	623-10	623-2
32	4	10	624-4	624-9	<b>624-6</b>	624-7	624-10	624-2
32	5	10	625-4	625-9	<b>625-6</b>	625-7	625-10	625-2



613-4

Amp.	Poles	pack. unit	110V~	230V~	400V~
			50/60Hz 4h	50/60Hz 3p=6h 4p+5p=9h	50/60Hz 3p=9h 4p+5p=6h
			Cat.No.	Cat.No.	Cat.No.
<b>with flange 70 x 70</b>					
16	3	10	613-4TT	<b>613-6TT</b>	613-9TT
16	5	10	615-4TT	615-9TT	<b>615-6TT</b>
32	4	10	624-4TT	624-9TT	<b>624-6TT</b>
32	5	10	625-4TT	625-9TT	<b>625-6TT</b>



613-4TT

Amp.	Poles	pack. unit	110V~	230V~	400V~	500V~	>50-500V~	>50-500V~
			50/60Hz 4h	50/60Hz 3p=6h 4p+5p=9h	50/60Hz 3p=9h 4p+5p=6h	50/60Hz 7h	100-300Hz 10h	301-500Hz 2h
			Cat.No.	Cat.No.	Cat.No.	Cat.No.	Cat.No.	Cat.No.
<b>with flange 60 x 60</b>								
16	3	10	613-4f6	<b>613-6f6</b>	613-9f6	613-7f6	613-10f6	613-2f6
16	4	10	614-4f6	614-9f6	<b>614-6f6</b>	614-7f6	614-10f6	614-2f6
16	5	10	615-4f6	615-9f6	<b>615-6f6</b>	615-7f6	615-10f6	615-2f6



613-6f6

Amp.	Poles	pack. unit	110V~	230V~	400V~	500V~	>50-500V~	>50-500V~
			50/60Hz 4h	50/60Hz 3p=6h 4p+5p=9h	50/60Hz 3p=9h 4p+5p=6h	50/60Hz 7h	100-300Hz 10h	301-500Hz 2h
			Cat.No.	Cat.No.	Cat.No.	Cat.No.	Cat.No.	Cat.No.
<b>with flange 56 x 56</b>								
16	3	10	613-4f3	<b>613-6f3</b>	613-9f3	613-7f3	613-10f3	613-2f3
16	4	10	614-4f3	614-9f3	<b>614-6f3</b>	614-7f3	614-10f3	614-2f3



614-6f3

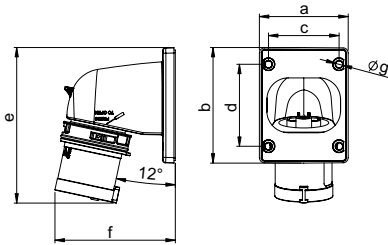
Positioning table (in mm):

		E1	L2	L3	T	V
16	3	29-31	≥75	40-41	≥4	≥8
16	4	33-35	≥80	46-47	≥5	≥8
16	5	37-39	≥90	52-53	≥7	≥8
32	3	39-41	≥90	53-54	≥7	≥8
32	4	39-41	≥90	53-54	≥7	≥8
32	5	44-46	≥105	59-60	≥8	≥9

For correct use a locking device has to be provided (see illustration).



# Flanged plugs



## „Twist“ Flanged plug angled

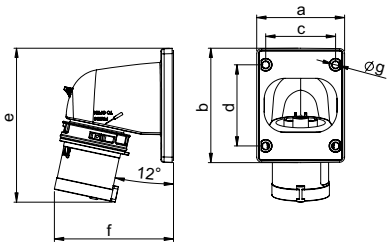
Poles	16 Amp			32 Amp		
	3	4	5	3	4	5
a	66	66	90	90	90	90
b	86	86	100	100	100	100
c	53	53	77	77	77	77
d	61	61	85	85	85	85
e	116	117	153	163	163	164
f	90	93	98	100	100	103
g	5	5	5	5	5	5

Kind of connection:	Screw terminal					
Wire flexible [mm <sup>2</sup> ]	1-2,5			2,5-6		
solid [mm <sup>2</sup> ]	1-4			2,5-10		
Contact screws [Ncm]	100 Ncm			110 Ncm		
Weight [g]	129	147	192	203	223	250

- with screw terminals
- housing material: PC/ABS
- contacts: brass
  - to order nickel-plated contacts please add a "v" e.g. 77715-6v

**IP44** splashproof



## „Turbo Twist“ Flanged plug angled

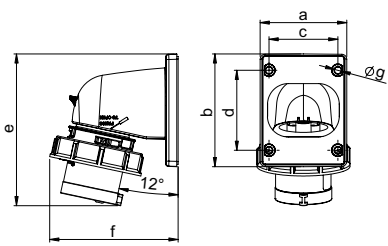
Poles	16 Amp			32 Amp		
	3	4	5	3	4	5
a	66	66	90	90	90	90
b	86	86	100	100	100	100
c	53	53	77	77	77	77
d	61	61	85	85	85	85
e	116	117	153	163	163	164
f	90	93	98	100	100	103
g	5	5	5	5	5	5

Kind of connection:	Screwless terminal					
Wire flexible [mm <sup>2</sup> ]	1-2,5			2,5-6		
solid [mm <sup>2</sup> ]	1-4			2,5-10		
Weight [g]	131	151	196	207	228	260

- screwless connection technology
- housing material: PC/ABS
- contacts: brass
  - to order nickel-plated contacts please add a "v" e.g. 77715-6TTv

**IP44** splashproof



## „Twist“ Flanged plug angled

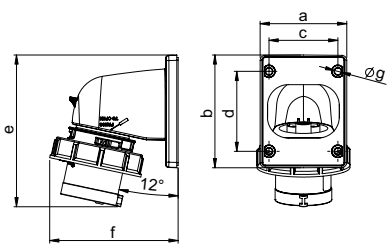
Poles	16 Amp			32 Amp		
	3	4	5	3	4	5
a	66	66	90	90	90	90
b	86	86	100	100	100	100
c	53	53	77	77	77	77
d	61	61	85	85	85	85
e	116	117	153	163	163	164
f	99	103	107	110	110	114
g	5	5	5	5	5	5

Kind of connection:	Screw terminal					
Wire flexible [mm <sup>2</sup> ]	1-2,5			2,5-6		
solid [mm <sup>2</sup> ]	1-4			2,5-10		
Contact screws [Ncm]	100 Ncm			110 Ncm		
Weight [g]	152	167	218	235	255	288

- with screw terminals
- housing material: PC/ABS
- contacts: brass
  - to order nickel-plated contacts please add a "v" e.g. 777152-6v

**IP67** watertight



## „Turbo Twist“ Flanged plug angled

Poles	16 Amp			32 Amp		
	3	4	5	3	4	5
a	66	66	90	90	90	90
b	86	86	100	100	100	100
c	53	53	77	77	77	77
d	61	61	85	85	85	85
e	116	117	153	163	163	164
f	99	103	107	110	110	114
g	5	5	5	5	5	5

Kind of connection:	Screwless terminal					
Wire flexible [mm <sup>2</sup> ]	1-2,5			2,5-6		
solid [mm <sup>2</sup> ]	1-4			2,5-10		
Weight [g]	155	171	222	239	261	297

- screwless connection technology
- housing material: PC/ABS
- contacts: brass
  - to order nickel-plated contacts please add a "v" e.g. 777152-6TTv

**IP67** watertight

Amp.	Poles	pack. unit	110V~	230V~	400V~	500V~	>50-500V~	>50-500V~
			Cat.No.	Cat.No.	Cat.No.	Cat.No.	Cat.No.	Cat.No.
			50/60Hz 4h	50/60Hz 3p=6h 4p+5p=9h	50/60Hz 3p=9h 4p+5p=6h	50/60Hz 7h	100-300Hz 10h	301-500Hz 2h
16	3	10	77713-4	<b>77713-6</b>	77713-9	77713-7	77713-10	77713-2
16	4	10	77714-4	77714-9	<b>77714-6</b>	77714-7	77714-10	77714-2
16	5	10	77715-4	77715-9	<b>77715-6</b>	77715-7	77715-10	77715-2
32	3	5	77723-4	<b>77723-6</b>	77723-9	77723-7	77723-10	77723-2
32	4	5	77724-4	77724-9	<b>77724-6</b>	77724-7	77724-10	77724-2
32	5	5	77725-4	77725-9	<b>77725-6</b>	77725-7	77725-10	77725-2



77713-6

16	3	10	77713-4TT	<b>77713-6TT</b>	77713-9TT			
16	4	10	77714-4TT	77714-9TT	<b>77714-6TT</b>			
16	5	10	77715-4TT	77715-9TT	<b>77715-6TT</b>			
32	3	5	77723-4TT	<b>77723-6TT</b>	77723-9TT			
32	4	5	77724-4TT	77724-9TT	<b>77724-6TT</b>			
32	5	5	77725-4TT	77725-9TT	<b>77725-6TT</b>			

**TURBO**  
TWIS  
click



77713-6TT

16	3	10	777132-4	<b>777132-6</b>	777132-9	777132-7	777132-10	777132-2
16	4	10	777142-4	777142-9	<b>777142-6</b>	777142-7	777142-10	777142-2
16	5	5	777152-4	777152-9	<b>777152-6</b>	777152-7	777152-10	777152-2
32	3	5	777232-4	<b>777232-6</b>	777232-9	777232-7	777232-10	777232-2
32	4	5	777242-4	777242-9	<b>777242-6</b>	777242-7	777242-10	777242-2
32	5	5	777252-4	777252-9	<b>777252-6</b>	777252-7	777252-10	777252-2



777132-6

16	3	10	777132-4TT	<b>777132-6TT</b>	777132-9TT			
16	4	10	777142-4TT	777142-9TT	<b>777142-6TT</b>			
16	5	5	777152-4TT	777152-9TT	<b>777152-6TT</b>			
32	3	5	777232-4TT	<b>777232-6TT</b>	777232-9TT			
32	4	5	777242-4TT	777242-9TT	<b>777242-6TT</b>			
32	5	5	777252-4TT	777252-9TT	<b>777252-6TT</b>			

**TURBO**  
TWIS  
click

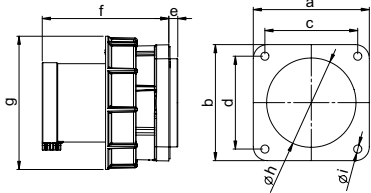


777152-6TT





# Flanged plugs

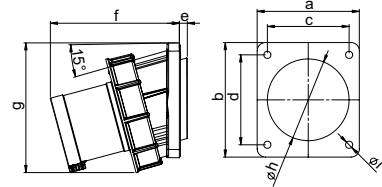


## „Power Twist“ Flanged plug straight

	63 Amp			125 Amp		
	3	4	5	3	4	5
Poles	3	4	5	3	4	5
Flange						
a x b	100	100	100	120	120	120
Fixing center						
c x d	80	80	80	100	100	100
e	8	8	8	13	13	13
f	109	109	109	118	118	118
g	115	115	115	131	131	131
h	77	77	77	95	95	95
i	7	7	7	7	7	7
Kind of connection:	Contact frame with screws					
Wire flexible [mm <sup>2</sup> ]	6-16			16-50		
solid [mm <sup>2</sup> ]	6-25			16-70		
Contact screws [Ncm]	200 Ncm			450 Ncm		
Weight [g]	479	531	570	786	891	998

- contact frame with screws
- housing material: PA6
- contacts: nickel-plated contacts, with pilot contact (see page 9)
- for waterproof cover and cable-glands see accessories page 44

**IP66/67** watertight  
**IP44** on request

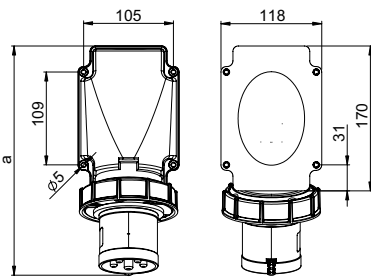


## „Power Twist“ Flanged plug sloping

	63 Amp			125 Amp		
	3	4	5	3	4	5
Poles	3	4	5	3	4	5
a	100	100	100	120	120	120
b	112	112	112	130	130	130
c	80	80	80	100	100	100
d	88	88	88	108	108	108
e	8	8	8	8	8	8
f	127	127	127	139	139	139
g	127	127	127	145	145	145
h	80	80	80	100	100	100
i	7	7	7	7	7	7
Kind of connection:	Contact frame with screws					
Wire flexible [mm <sup>2</sup> ]	6-16			16-50		
solid [mm <sup>2</sup> ]	6-25			16-70		
Contact screws [Ncm]	200 Ncm			450 Ncm		
Weight [g]	515	566	608	833	942	1044

- contact frame with screws
- housing material: PA6
- contacts: nickel-plated contacts, with pilot contact (see page 9)
- for waterproof cover and cable-glands see accessories page 44

**IP66/67** watertight



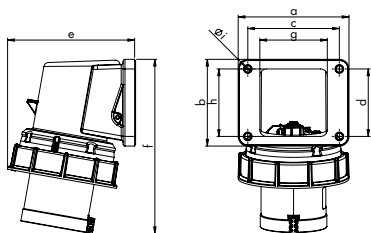
b=height  
angle=15°

## „Power Twist“ Flanged plug

	63 Amp		
	3	4	5
Poles	3	4	5
a	271	271	271
b	124	124	124
Kind of connection:	Contact frame with screws		
Wire flexible [mm <sup>2</sup> ]	6-16		
solid [mm <sup>2</sup> ]	6-25		
Contact screws [Ncm]	200 Ncm		
Weight [g]	653	704	746

- contact frame with screws
- housing material: PC/ABS
- contacts: nickel-plated contacts, with pilot contact (see page 9)
- for waterproof cover and cable-glands see accessories page 44
- rear entry
- incl. flange gasket

**IP66/67** watertight



## „Power Twist“ Flanged plug compact

	63 Amp		
	3	4	5
Poles	3	4	5
a	116	116	116
b	91	91	91
c	95	95	95
d	70	70	70
e	132	132	132
f	181	181	181
g	70	70	70
h	70	70	70
Øi	6,5	6,5	6,5
Kind of connection:	Contact frame with screws		
Wire flexible [mm <sup>2</sup> ]	6-16		
solid [mm <sup>2</sup> ]	6-25		
Contact screws [Ncm]	200 Ncm		
Weight [g]	547	598	640

- contact frame with screws
- housing material: PA6
- contacts: nickel-plated contacts, with pilot contact (see page 9)
- for waterproof cover and cable-glands see accessories page 44
- rear entry
- incl. flange gasket

**IP66/67** watertight

**110V~**

50/60Hz  
4h

**230V~**

50/60Hz  
3p=6h  
4p+5p=9h

**400V~**

50/60Hz  
3p=9h  
4p+5p=6h

**500V~**

50/60Hz  
7h

**>50-500V~**

100-300Hz  
10h

**>50-500V~**

301-500Hz  
2h

Amp. Poles pack-unit

Cat.No.

Cat.No.

Cat.No.

Cat.No.

Cat.No.

Cat.No.

with flange 100 x 100

63	3	2	633-4	<b>633-6</b>	633-9	633-7	633-10	633-2
63	4	2	634-4	634-9	<b>634-6</b>	634-7	634-10	634-2
63	5	2	635-4	635-9	<b>635-6</b>	635-7	635-10	635-2

with flange 120 x 120

125	3	2	643-4	<b>643-6</b>	643-9	643-7	643-10	643-2
125	4	2	644-4	644-9	<b>644-6</b>	644-7	644-10	644-2
125	5	2	645-4	645-9	<b>645-6</b>	645-7	645-10	645-2



635-6

with flange 100 x 112

63	3	2	733-4	<b>733-6</b>	733-9	733-7	733-10	733-2
63	4	2	734-4	734-9	<b>734-6</b>	734-7	734-10	734-2
63	5	2	735-4	735-9	<b>735-6</b>	735-7	735-10	735-2

with flange 120 x 130

125	3	2	743-4	<b>743-6</b>	743-9	743-7	743-10	743-2
125	4	2	744-4	744-9	<b>744-6</b>	744-7	744-10	744-2
125	5	2	745-4	745-9	<b>745-6</b>	745-7	745-10	745-2



735-6

63	3	2	77733-4	<b>77733-6</b>	77733-9	77733-7	77733-10	77733-2
63	4	2	77734-4	77734-9	<b>77734-6</b>	77734-7	77734-10	77734-2
63	5	2	77735-4	77735-9	<b>77735-6</b>	77735-7	77735-10	77735-2



77735-6

63	3	2	77733-4k	<b>77733-6k</b>	77733-9k	77733-7k	77733-10k	77733-2k
63	4	2	77734-4k	77734-9k	<b>77734-6k</b>	77734-7k	77734-10k	77734-2k
63	5	2	77735-4k	77735-9k	<b>77735-6k</b>	77735-7k	77735-10k	77735-2k



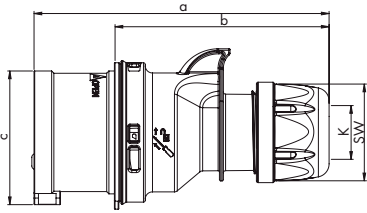
77735-6k

**new!**



# Phase inverters

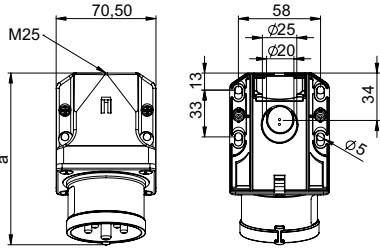
## „Shark“ Phase inverter



	16 Amp		32 Amp	
Poles	4	5	4	5
a	128	134	150	155
b	92	98	104	109
c	53	61	63	70
K_cable Ø [mm]	6-15	8-16	11,5-20	11,5-22
Kind of connection:	Screw terminal			
Wire flexible class 5 or 6 [mm²]	1-2,5		2,5-6	
Contact screws [Ncm]	100 Ncm		110 Ncm	
SW	42	42	50	50
Weight [g]	131	154	204	236

- with screw terminals
- housing material: PA6
- contacts: nickel-plated contacts

**IP44** splashproof  
**IP67** watertight



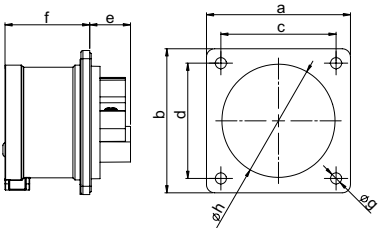
## Phase inverter - Wall mounted plug

	16 Amp		32 Amp	
Poles	5	5	5	5
a	122	132	132	132
b	79	85	85	85
M	25	25	25	25
Kind of connection:	Screw terminal			
Wire flexible class 5 or 6 [mm²]	1-2,5		2,5-6	
Contact screws [Ncm]	100 Ncm		110 Ncm	
Weight [g]	205		253	

- with screw terminals
- housing material: PA6
- contacts: nickel-plated contacts
- top and rear entry
- incl. cable gland

**IP44** splashproof

b=height  
angle=15°

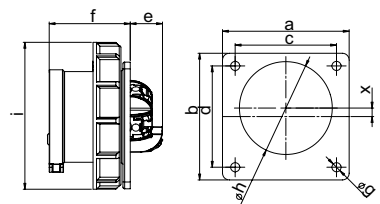


## Phase inverter - Flanged plug straight

	16 Amp		32 Amp	
Poles	5	5	5	5
Flange				
a x b	70	70	70	70
Fixing center				
c x d	56	56	56	56
e	20	21	21	21
f	42	51	51	51
g	5,5	5,5	5,5	5,5
h	55	55	55	55
Kind of connection:	Screw terminal			
Wire flexible class 5 or 6 [mm²]	1-2,5		2,5-6	
Contact screws [Ncm]	100 Ncm		110 Ncm	
Weight [g]	118		165	

- with screw terminals
- housing material: PA6
- contacts: nickel-plated contacts
- According to EN 60309:  
For correct use a locking device has to be provided (see page 34)

**IP44** splashproof



## Phase inverter - Flanged plug straight

	16 Amp		32 Amp	
Poles	5	5	5	5
Flange				
a x b	75	75	75	75
Fixing center				
c x d	60	60	60	60
e	13	14	14	14
f	48	58	58	58
g	5,5	5,5	5,5	5,5
h	55	55	55	55
h	87	100	100	100
x	5,05	0	0	0
Kind of connection:	Screw terminal			
Wire flexible class 5 or 6 [mm²]	1-2,5		2,5-6	
Contact screws [Ncm]	100 Ncm		110 Ncm	
Weight [g]	145		208	

- with screw terminals
- housing material: PA6
- contacts: nickel-plated contacts
- According to EN 60309:  
For correct use a locking device has to be provided (see page 34)
- for 16A 3p and 16A 5p the plug is placed off centered for keeping the standards

**IP67** watertight

**230V~**

50/60Hz  
3p=6h  
4p+5p=9h

**400V~**

50/60Hz  
3p=9h  
4p+5p=6h

Amp.	Poles	pack. unit
16	4	10
16	4	10
16	5	10
16	5	10
32	4	10
32	4	10
32	5	10
32	5	10

Cat.No.	Cat.No.	protection degree
7014-9	7014-6	IP44
70142-9	70142-6	IP67
	<b>7015-6</b>	IP44
	70152-6	IP67
7024-9	7024-6	IP44
70242-9	70242-6	IP67
	<b>7025-6</b>	IP44
	70252-6	IP67



7015-6

**new!**

16	5	10
16	5	10
32	5	10
32	5	10

7715-6	IP44
7715-6d	IP44
7725-6	IP44
7725-6d	IP44

with cap

with cap



7715-6

with flange 70 x 70		
16	5	10
32	5	10

8615-6	IP44
8625-6	IP44



8615-6

with flange 75 x 75		
16	5	10
32	5	10

86152-6	IP67
86252-6	IP67

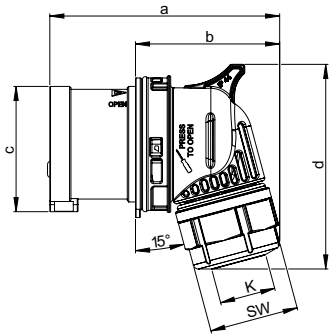


86152-6



# Phase inverters

## „Twist“ Phase inverter - Angled plug

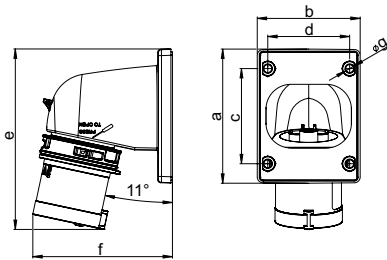


	16 Amp		32 Amp	
Poles	4	5		5
a	98	108		135
b	62	71		90
c	53	61		70
d	87	99		114
e [°]	15	20		25
K_cable Ø [mm]	6-15	8-16		11,5-22
Kind of connection:	Screw terminal			
Wire flexible class 5 or 6 [mm²]	1-2,5		2,5-6	
Contact screws [Ncm]	100 Ncm		110Ncm	
SW	38	42		50
Weight [g]	133	158		238

- with screw terminals
- housing material:  
16/4: PA6  
16/5 32/5: PC/ABS
- contacts: nickel-plated contacts

**IP44** splashproof  
**IP67** watertight

## „Twist“ Phase inverter - Flanged plug angled



	16 Amp		32 Amp	
Poles	4	5	4	5
a	66	90	90	90
b	86	100	100	100
c	53	77	77	77
d	61	85	85	85
e	117	153	163	164
f	93	98	100	103
g	5	5	5	5
Kind of connection:	Screw terminal			
Wire flexible class 5 or 6 [mm²]	1-2,5		2,5-6	
Contact screws [Ncm]	100 Ncm		110 Ncm	
Weight [g]	147	192	223	250

- with screw terminals
- housing material: PC/ABS
- contacts: nickel-plated contacts

**IP44** splashproof  
**IP67** watertight



**230V~**

50/60Hz  
3p=6h  
4p+5p=9h

**400V~**

50/60Hz  
3p=9h  
4p+5p=6h

Amp.	Poles	pack. unit	Cat.No.	Cat.No.	protection degree
16	4	10	7414-9	7414-6	IP44
16	4	10	74142-9	74142-6	IP67
16	5	10		<b>7415-6</b>	IP44
16	5	10		74152-6	IP67
32	5	10		<b>7425-6</b>	IP44
32	5	10		74252-6	IP67



7414-6



74142-6

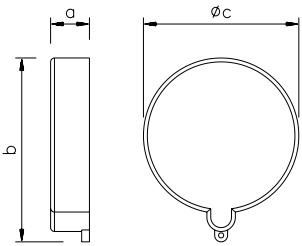
16	4	10	77814-9	77814-6	IP44
16	4	10	778142-9	778142-6	IP67
16	5	5		<b>77815-6</b>	IP44
16	5	5		778152-6	IP67
32	4	5	77824-9	77824-6	IP44
32	4	5	778242-9	778242-6	IP67
32	5	5		<b>77825-6</b>	IP44
32	5	5		778252-6	IP67



77814-6



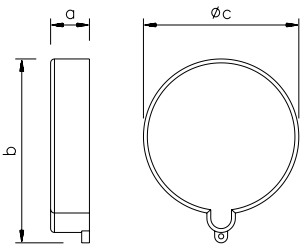
# Accessories



## Cap 16 and 32A

Poles	16 Amp			32 Amp		
	3	4	5	3	4	5
a	15	15	15	15	15	15
b	56	63	71	71	71	79
c	48	54	61	61	61	67
Weight [g]	10	12	14	14	14	16

- for plugs and appliance plugs to protect contacts against dust
- material: TPE/PP



## Cap 63 and 125A

Poles	63 Amp			125 Amp		
	3	4	5	3	4	5
a	21	21	21	21	21	21
b	82	82	82	93	93	93
c	73	73	73	86	86	86
Weight [g]	21	21	21	25	25	25

- for plugs and appliance plugs to protect contacts against dust
- material: TPE/PP

## Water protection cap 63 and 125A

Poles	63 Amp			125 Amp		
	3	4	5	3	4	5
a	72	72	72	82	82	82
b	78	78	78	91	91	91
c	211	211	211	205	205	205
d	4	4	4	5	5	5
Weight [g]	75	75	75	98	98	98

- for plugs and appliance plugs
- material 63A: Polypropylen
- material 125A: Polyamide PA6

**IP67** watertight



Amp.	Poles	pack. unit	Cat.No.	
16	3	}	ts613g	
16	4		ts614g	
16	5		ts615g	
32	3		ts623g	
32	4		}	ts625g
32	5			



63	3	}	ts635g
63	4		
63	5		
125	3	}	ts645g
125	4		
125	5		



63	3	}	ts7632g
63	4		
63	5		
125	3	}	ts1252g
125	4		
125	5		



## Accessories

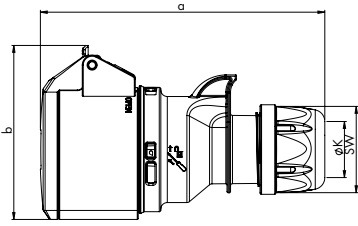
**Note:** For entries without threads, marked by „Ø“, the appropriate lock nuts should be used!

IP68	<b>M25x1,5</b>	<b>screw fitting - black</b>	(cable diameter 13-18mm)	<b>23251515140</b>
IP68	<b>M32x1,5</b>	<b>screw fitting - black</b>	(cable diameter 18-25mm)	<b>23321515200</b>
IP68	<b>M40x1,5</b>	<b>screw fitting - black</b>	(cable diameter 22-32mm)	<b>23401518260</b>
IP68	<b>M50x1,5</b>	<b>screw fitting - black</b>	(cable diameter 32-38mm)	<b>23501518310</b>
IP68	<b>M63x1,5</b>	<b>screw fitting - black</b>	(cable diameter 34-44mm)	<b>23631518350</b>
Lock nut	<b>M40x1,5</b>		Nickel-coated brass	<b>264015009</b>
Lock nut	<b>M50x1,5</b>		Nickel-coated brass	<b>265015009</b>



# Connectors

## „Shark“ Connector

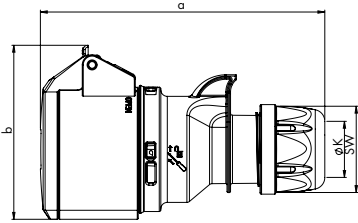


	16 Amp			32 Amp		
Poles	3	4	5	3	4	5
a	133	138	145	161	161	168
b	76	80	89	91	94	100
K_cable Ø [mm]	6-15	6-15	8-16	11,5-20	11,5-20	11,5-22
Kind of connection:	Screw terminal					
Wire flexible [mm <sup>2</sup> ]	1-2,5			2,5-6		
Contact screws [Ncm]	100 Ncm			110 Ncm		
SW	42	42	42	50	50	50
Weight [g]	142	161	189	229	244	294

- with screw terminals
- housing material: PA6
- contacts: brass
- to order nickel-plated contacts please add a "v" e.g. 215-6v

**IP44** splashproof

## „Turbo Shark“ Connector

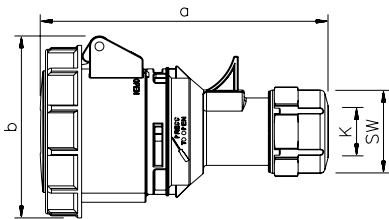


	16 Amp			32 Amp		
Poles	3	4	5	3	4	5
a	133	138	145	161	161	168
b	76	82	89	94	94	100
K_cable Ø [mm]	6-15	6-15	8-16	11,5-20	11,5-20	11,5-22
Kind of connection:	Screwless terminal					
Wire flexible [mm <sup>2</sup> ]	1-2,5			2,5-6		
SW	42	42	42	50	50	50
Weight [g]	144	162	193	228	244	295

- screwless connection technology
- housing material: PA6
- contacts: brass
- to order nickel-plated contacts please add a "v" e.g. 215-6TTv

**IP44** splashproof

## „Twist“ Connector

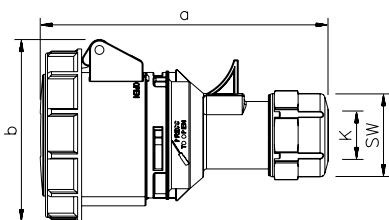


	16 Amp			32 Amp		
Poles	3	4	5	3	4	5
a	133	139	145	162	162	168
b	78	84	92	96	96	102
K_cable Ø [mm]	6-15	6-15	8-16	11,5-20	11,5-20	11,5-22
Kind of connection:	Screw terminal					
Wire flexible [mm <sup>2</sup> ]	1-2,5			2,5-6		
Contact screws [Ncm]	100 Ncm			110 Ncm		
SW	38	38	42	50	50	50
Weight [g]	164	187	212	266	285	319

- with screw terminals
- housing material: PA6
- contacts: brass
- to order nickel-plated contacts please add a "v" e.g. 2152-6v

**IP67** watertight

## „Turbo Twist“ Connector



	16 Amp			32 Amp		
Poles	3	4	5	3	4	5
a	133	139	145	162	162	168
b	78	84	92	96	96	102
K_cable Ø [mm]	6-15	6-15	8-16	11,5-20	11,5-20	11,5-22
Kind of connection:	Screwless terminal					
Wire flexible [mm <sup>2</sup> ]	1-2,5			2,5-6		
SW	38	38	42	50	50	50
Weight [g]	165	186	221	271	287	325

- screwless connection technology
- housing material: PA6
- contacts: brass
- to order nickel-plated contacts please add a "v" e.g. 2152-6TTv

**IP67** watertight

**110V~**

50/60Hz  
4h

**230V~**

50/60Hz  
3p=6h  
4p+5p=9h

**400V~**

50/60Hz  
3p=9h  
4p+5p=6h

**500V~**

50/60Hz  
7h

**>50-500V~**

100-300Hz  
10h

**>50-500V~**

301-500Hz  
2h

Amp. Poles pack unit

Cat.No.

Cat.No.

Cat.No.

Cat.No.

Cat.No.

Cat.No.

16	3	10
16	4	10
16	5	10
32	3	10
32	4	10
32	5	10

213-4
214-4
215-4
223-4
224-4
225-4

<b>213-6</b>
214-9
215-9
<b>223-6</b>
224-9
225-9

213-9
<b>214-6</b>
<b>215-6</b>
223-9
<b>224-6</b>
<b>225-6</b>

213-7
214-7
215-7
223-7
224-7
225-7

213-10
214-10
215-10
223-10
224-10
225-10

213-2
214-2
215-2
223-2
224-2
225-2



215-6



16	3	10
16	4	10
16	5	10
32	3	10
32	4	10
32	5	10

213-4TT
214-4TT
215-4TT
223-4TT
224-4TT
225-4TT

<b>213-6TT</b>
214-9TT
215-9TT
<b>223-6TT</b>
224-9TT
225-9TT

213-9TT
<b>214-6TT</b>
<b>215-6TT</b>
223-9TT
<b>224-6TT</b>
<b>225-6TT</b>



215-6TT

16	3	10
16	4	10
16	5	10
32	3	10
32	4	10
32	5	10

2132-4
2142-4
2152-4
2232-4
2242-4
2252-4

<b>2132-6</b>
2142-9
2152-9
<b>2232-6</b>
2242-9
2252-9

2132-9
<b>2142-6</b>
<b>2152-6</b>
2232-9
<b>2242-6</b>
<b>2252-6</b>



2152-6

16	3	10
16	4	10
16	5	10
32	3	10
32	4	10
32	5	10

2132-4TT
2142-4TT
2152-4TT
2232-4TT
2242-4TT
2252-4TT

<b>2132-6TT</b>
2142-9TT
2152-9TT
<b>2232-6TT</b>
2242-9TT
2252-9TT

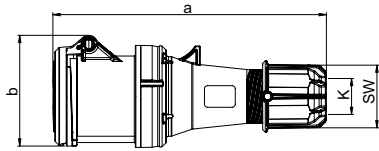
2132-9TT
<b>2142-6TT</b>
<b>2152-6TT</b>
2232-9TT
<b>2242-6TT</b>
<b>2252-6TT</b>



2132-6TT



# Connectors

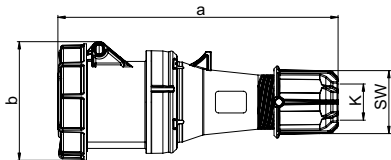


## „Power Twist“ Connector

	63 Amp		
Poles	3	4	5
a	269	269	269
b	107	107	107
K_cable Ø [mm]	14,5-36	14,5-36	14,5-36
Kind of connection:	Contact frame with screws		
Wire flexible [mm <sup>2</sup> ]	6-16		
Contact screws [Ncm]	200 Ncm		
SW	61	61	61
Weight [g]	624	664	720

- contact frame with screws
- housing material: PA6
- contacts: brass with lamellar contact CuBe
  - to order with pilot contact please add a „5“ e.g. 23351-6 (see page 9)
  - to order with pilot contact system (PCS) please add a „6“ e.g. 23361-6 (see page 10)

**IP44** splashproof

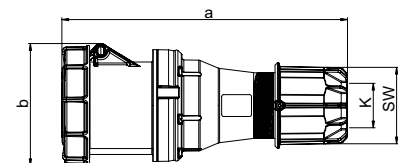


## „Power Twist“ Connector

	63 Amp		
Pole	3	4	5
a	269	269	269
b	114	114	114
K_cable Ø [mm]	14,5-36	14,5-36	14,5-36
Kind of connection:	Contact frame with screws		
Wire flexible [mm <sup>2</sup> ]	6-16		
Contact screws [Ncm]	200 Ncm		
SW	61	61	61
Weight [g]	669	710	768

- contact frame with screws
- housing material: PA6
- contacts: brass with lamellar contact CuBe
  - to order with pilot contact please add a „5“ e.g. 2335-6 (see page 9)
  - to order with pilot contact system (PCS) please add a „6“ e.g. 2336-6 (see page 10)

**IP66/67** watertight



## „Power Twist“ Connector

	125 Amp		
Pole	3	4	5
a	287	287	287
b	124	124	124
K_cable Ø [mm]	22,5-50	22,5-50	22,5-50
Kind of connection:	Contact frame with screws		
Wire flexible [mm <sup>2</sup> ]	16-50		
Contact screws [Ncm]	450 Ncm		
SW	81	81	81
Weight [g]	1060	1167	1266

- contact frame with screws
- housing material: PA6
- contacts: brass with lamellar contact CuBe
  - to order with pilot contact please add a „5“ e.g. 2435-6 (see page 9)
  - to order with pilot contact system (PCS) please add a „6“ e.g. 2436-6 (see page 10)

**IP66/67** watertight

Amp.	Poles	pack. unit	110V~	230V~	400V~	500V~	>50-500V~	>50-500V~
			50/60Hz 4h	50/60Hz 3p=6h 4p+5p=9h	50/60Hz 3p=9h 4p+5p=6h	50/60Hz 7h	100-300Hz 10h	301-500Hz 2h
			Cat.No.	Cat.No.	Cat.No.	Cat.No.	Cat.No.	Cat.No.
63	3	2	2331-4	<b>2331-6</b>	2331-9	2331-7	2331-10	2331-2
63	4	2	2341-4	2341-9	<b>2341-6</b>	2341-7	2341-10	2341-2
63	5	2	2351-4	2351-9	<b>2351-6</b>	2351-7	2351-10	2351-2



2351-6

63	3	2	233-4	<b>233-6</b>	233-9	233-7	233-10	233-2
63	4	2	234-4	234-9	<b>234-6</b>	234-7	234-10	234-2
63	5	2	235-4	235-9	<b>235-6</b>	235-7	235-10	235-2



235-6

125	3	2	243-4	<b>243-6</b>	243-9	243-7	243-10	243-2
125	4	2	244-4	244-9	<b>244-6</b>	244-7	244-10	244-2
125	5	2	245-4	245-9	<b>245-6</b>	245-7	245-10	245-2



245-6



# PCE

Connection  
to the future

**www.pcelectric.at** **PC Electric GesmbH**

Diesseits 145

4973 St. Martin im Innkreis

AUSTRIA

TEL +43 7751 61220

FAX +43 7751 6969

office@pcelectric.at